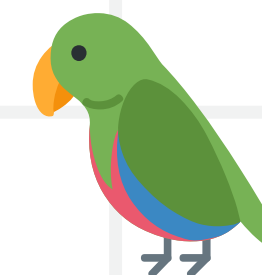
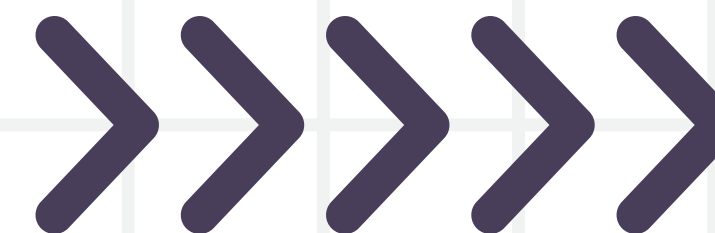


PARTY PARROTS



Eric, Nicole, Ryan, Yun Wen

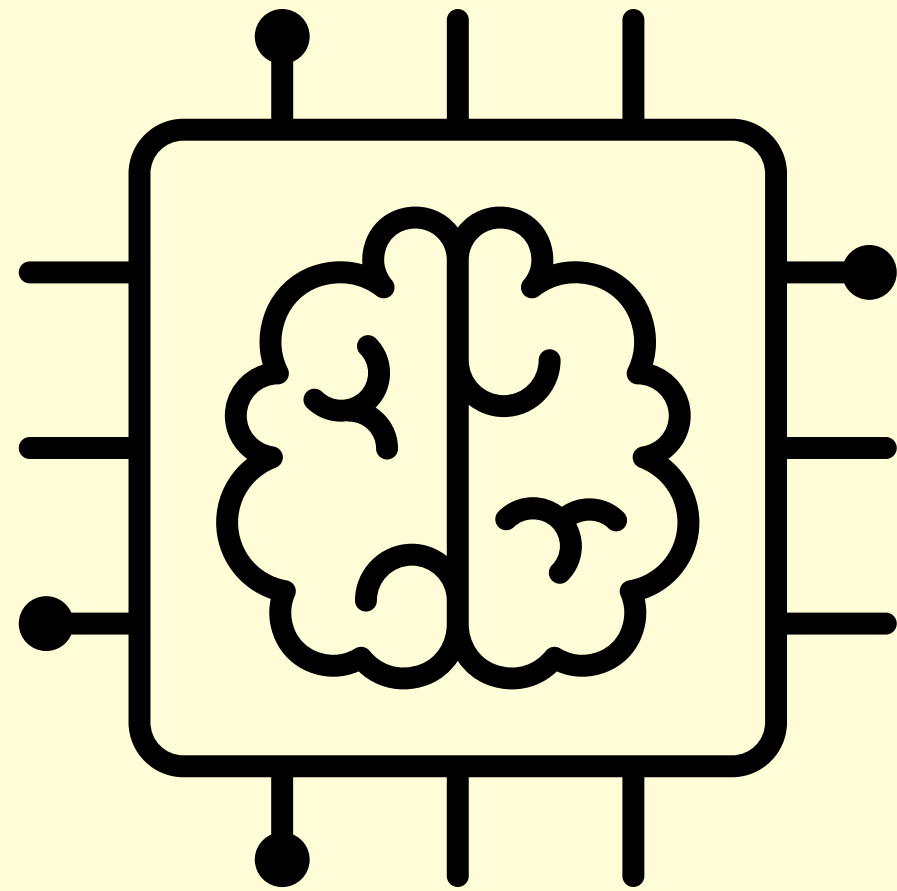


Presenting ParrotsGPT

SMU

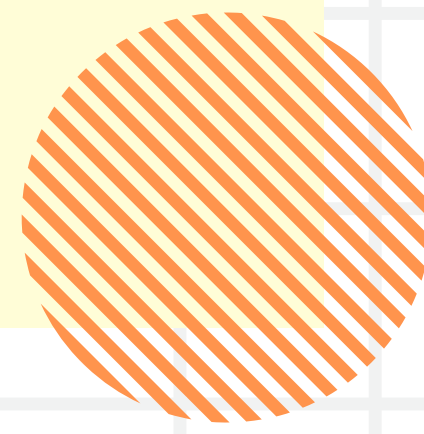


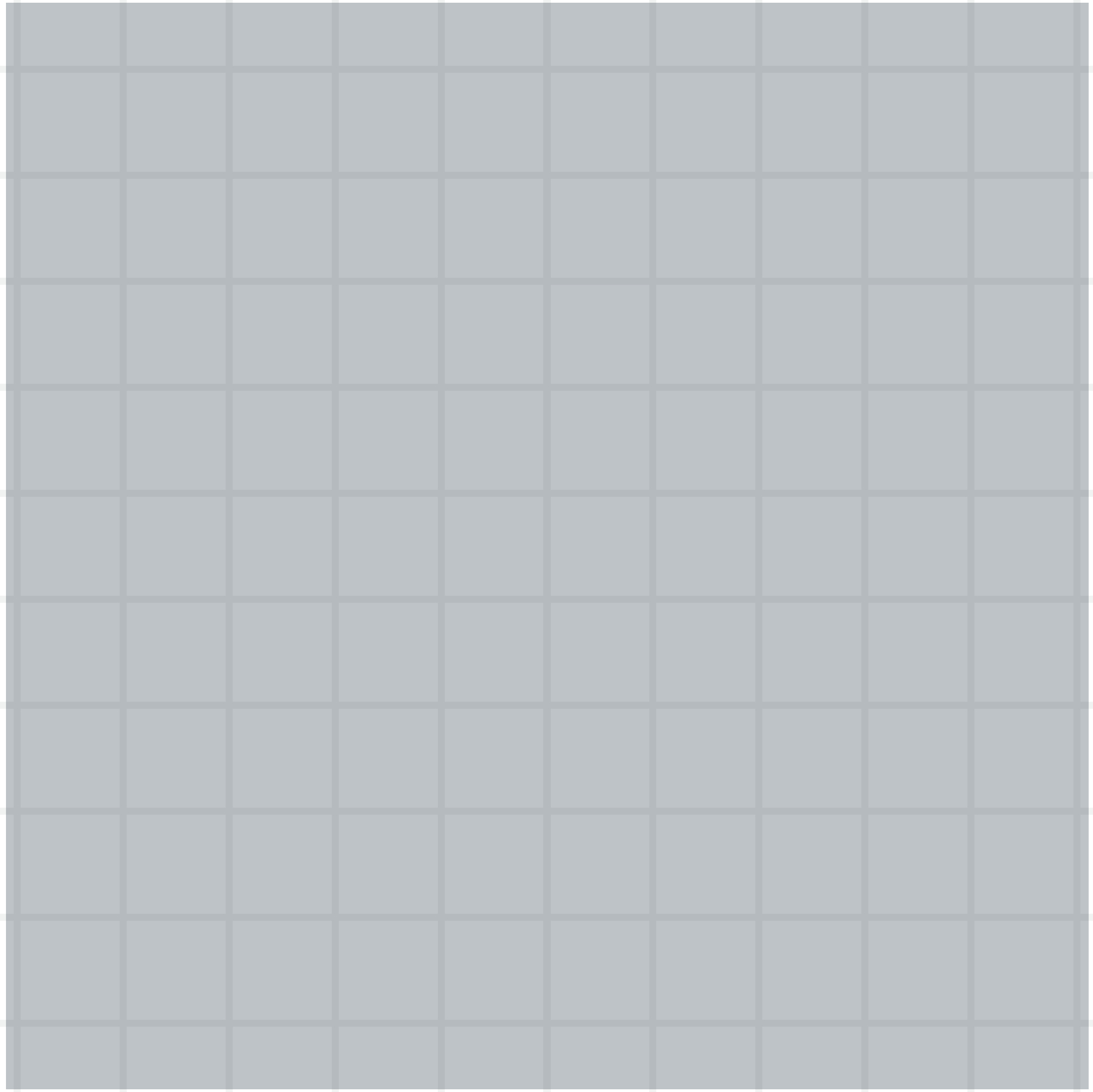
OUR VISION



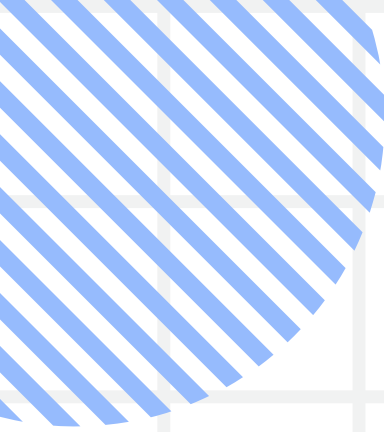
"The library in your pocket."

An eager AI assistant who cares about
your purpose, not just what you're
asking for.

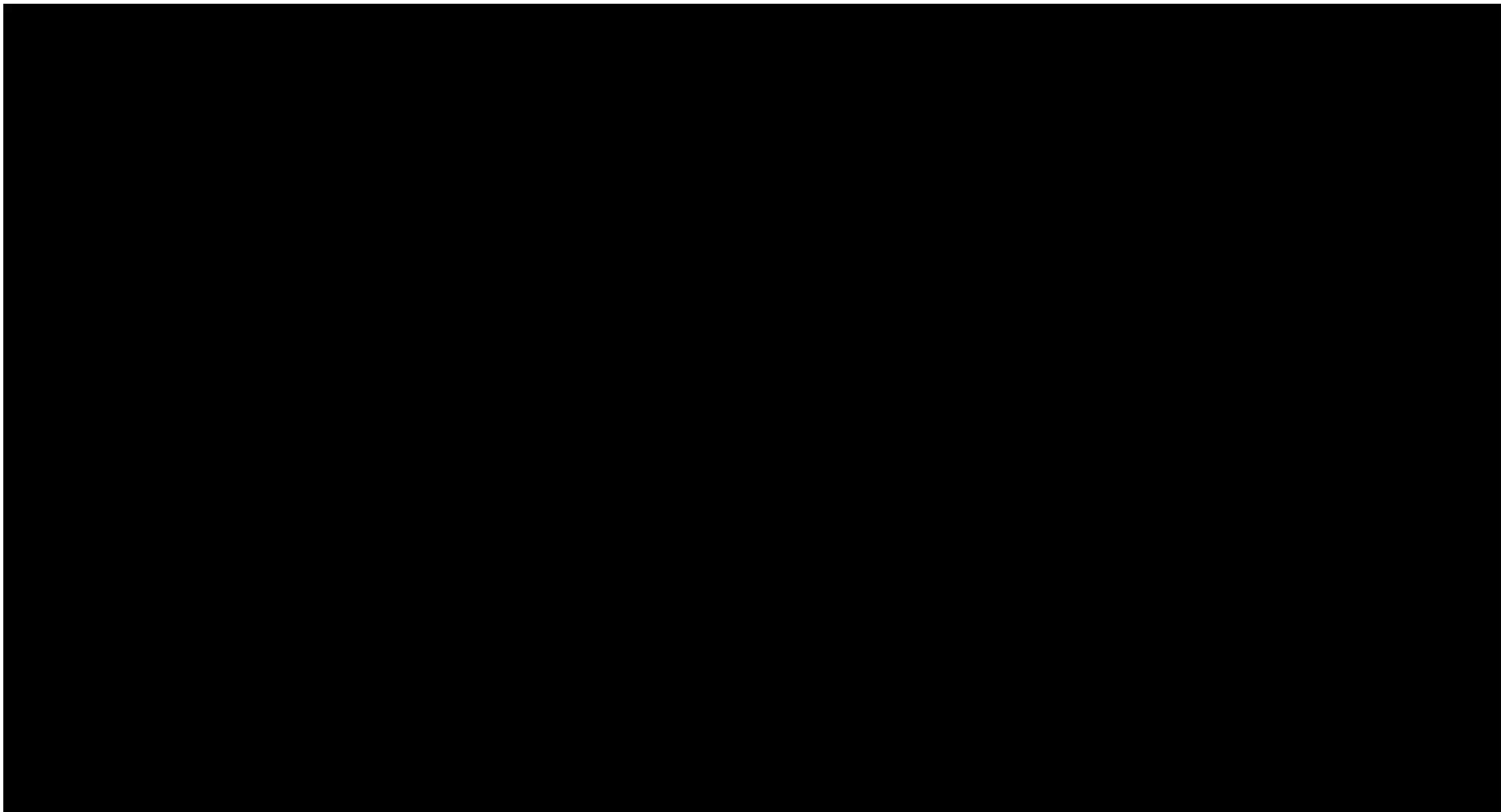






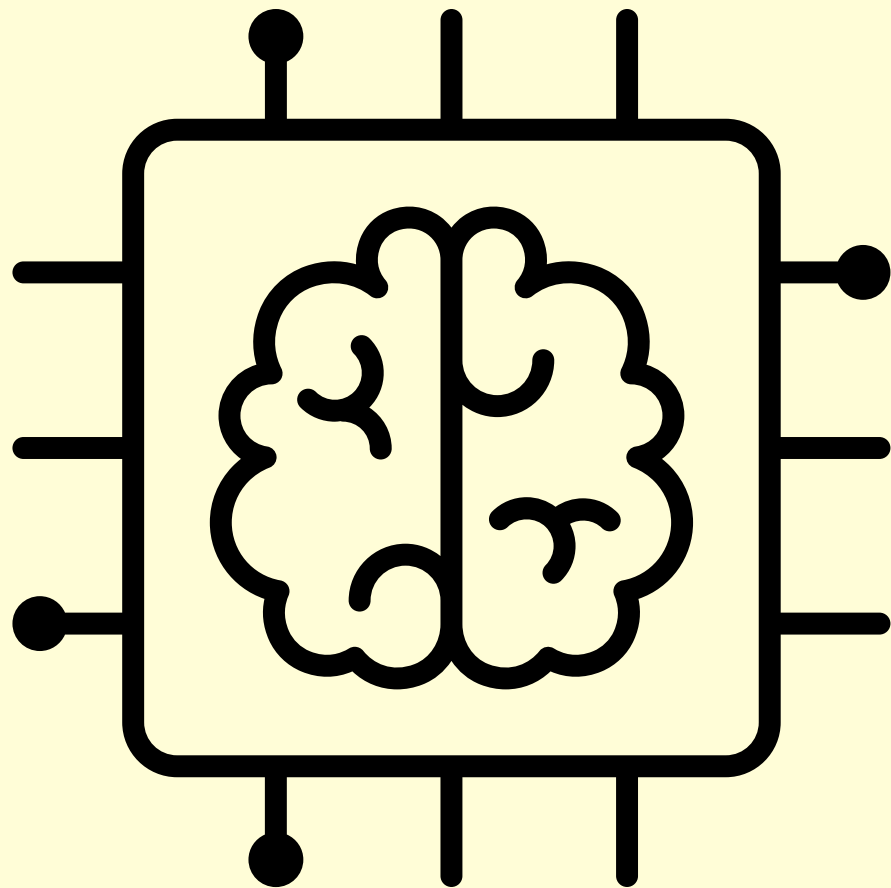


DEMO






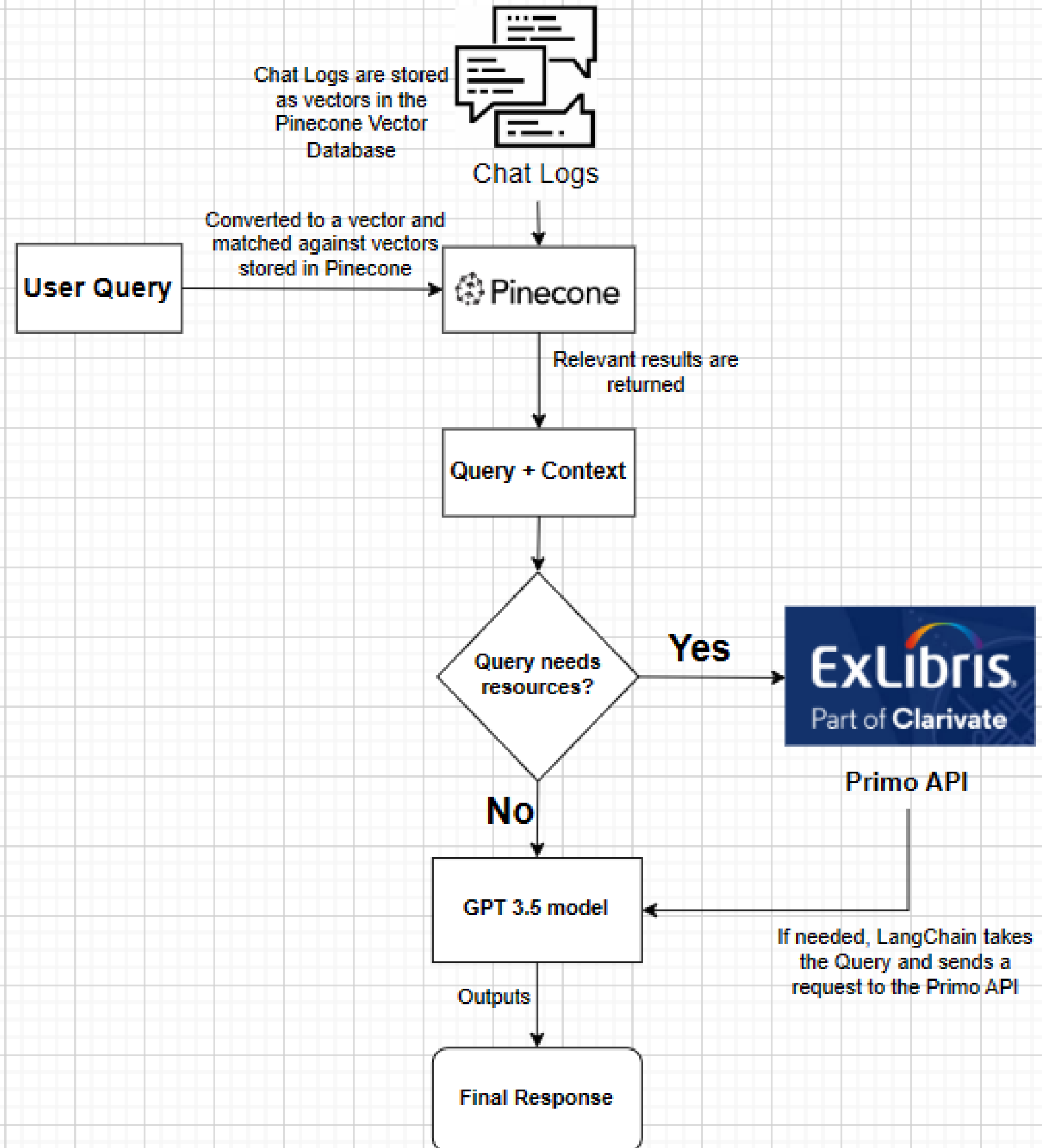
SOLUTION: FEATURES



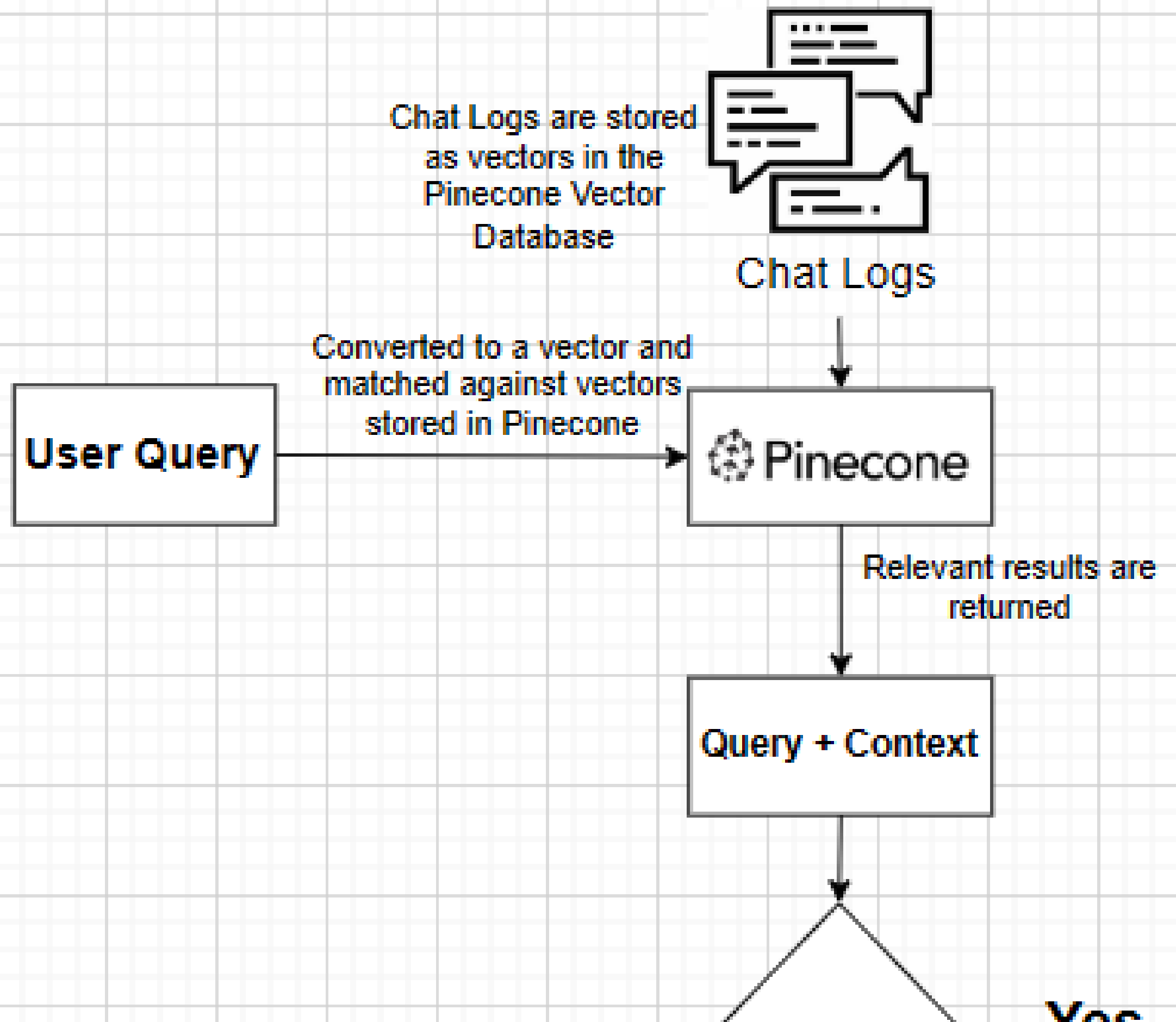
A powerful ML assistant powered by state-of-the-art GPT models.

- Understands user intent and profile
 - Remembers recent interactions
 - Backed by **reliable** data sources (Primo API, chatlogs)
- 

SOLUTION ARCHITECTURE

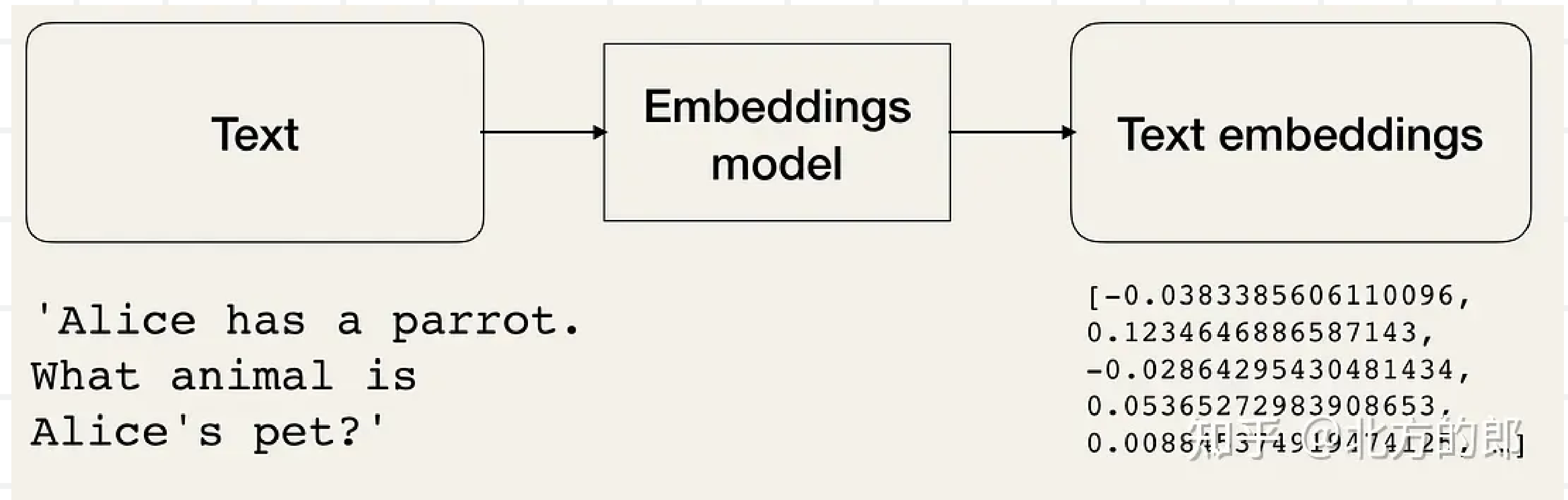


1. RETRIEVE RELEVANT HISTORICAL CHAT RECORDS



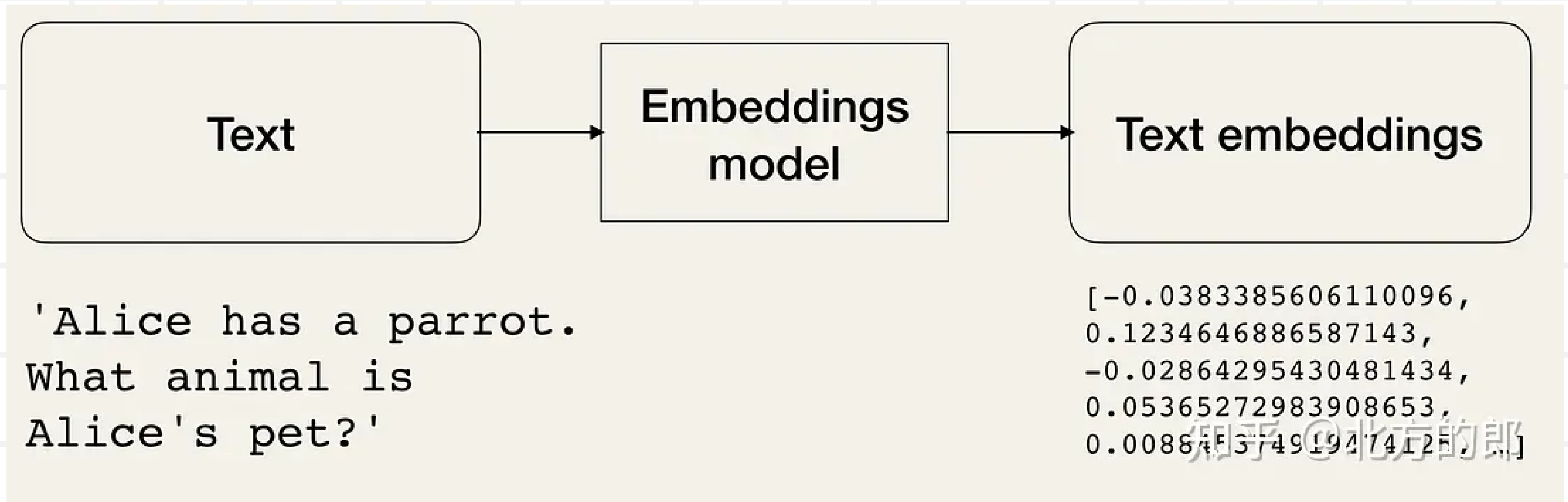
1. RETRIEVE RELEVANT HISTORICAL CHAT RECORDS BETWEEN PAST USERS AND LIBRARY STAFF

1. User query and chat log records are converted to vectors.

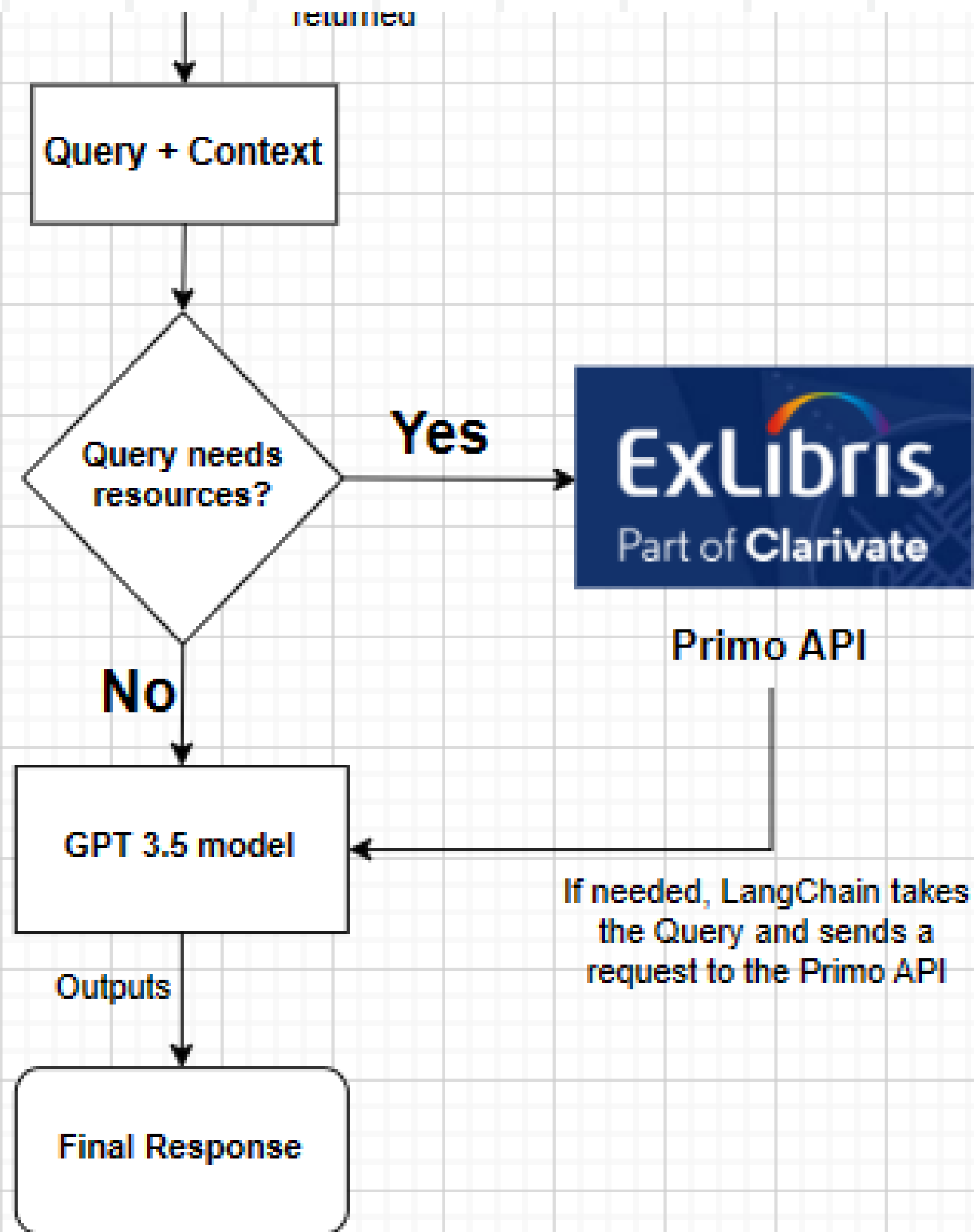


1. RETRIEVE RELEVANT HISTORICAL CHAT RECORDS

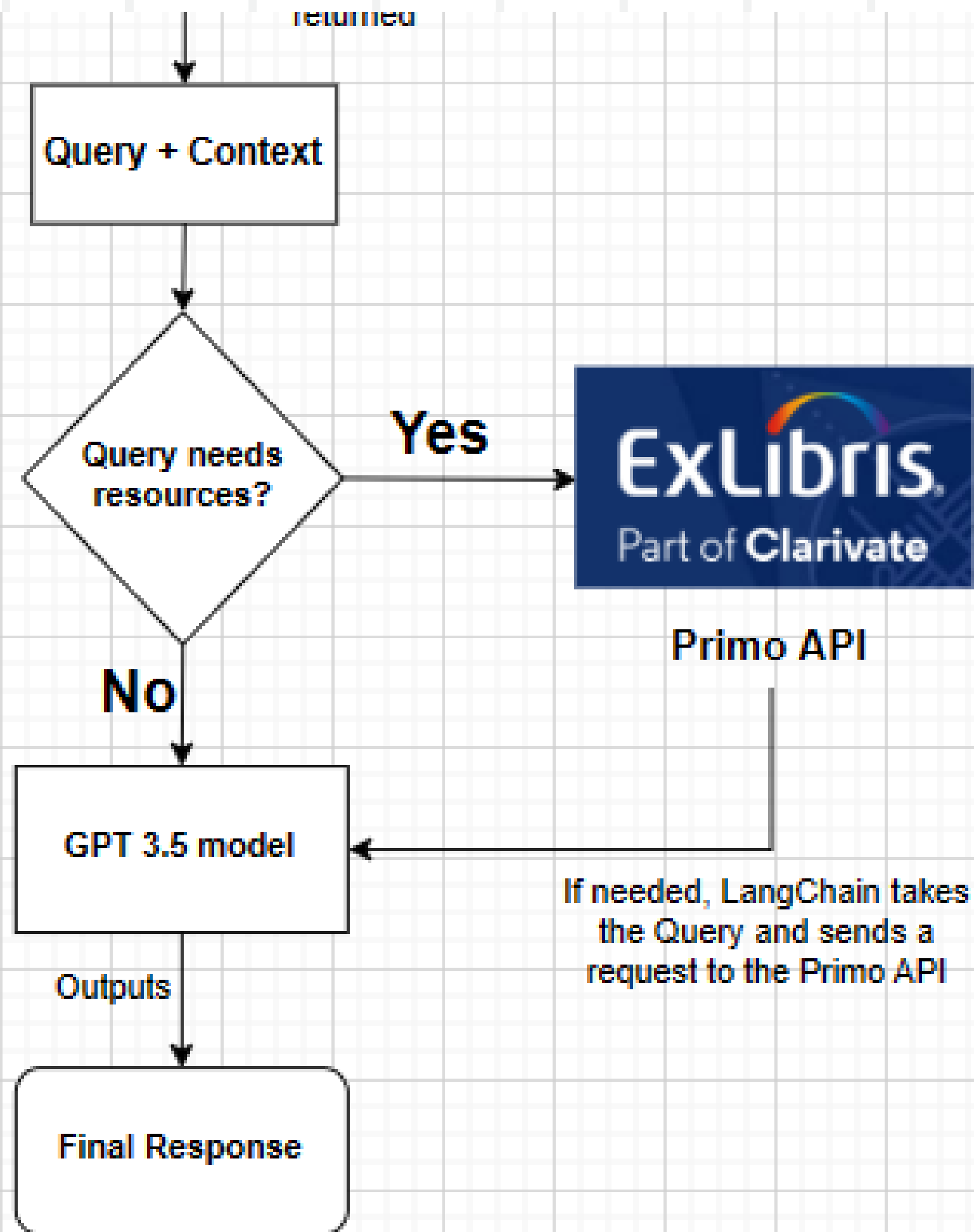
2. Chat logs with the most similar vectors to the queries are returned



2. IF NEEDED , RETRIEVE RELEVANT RESOURCES FROM PRIMO API



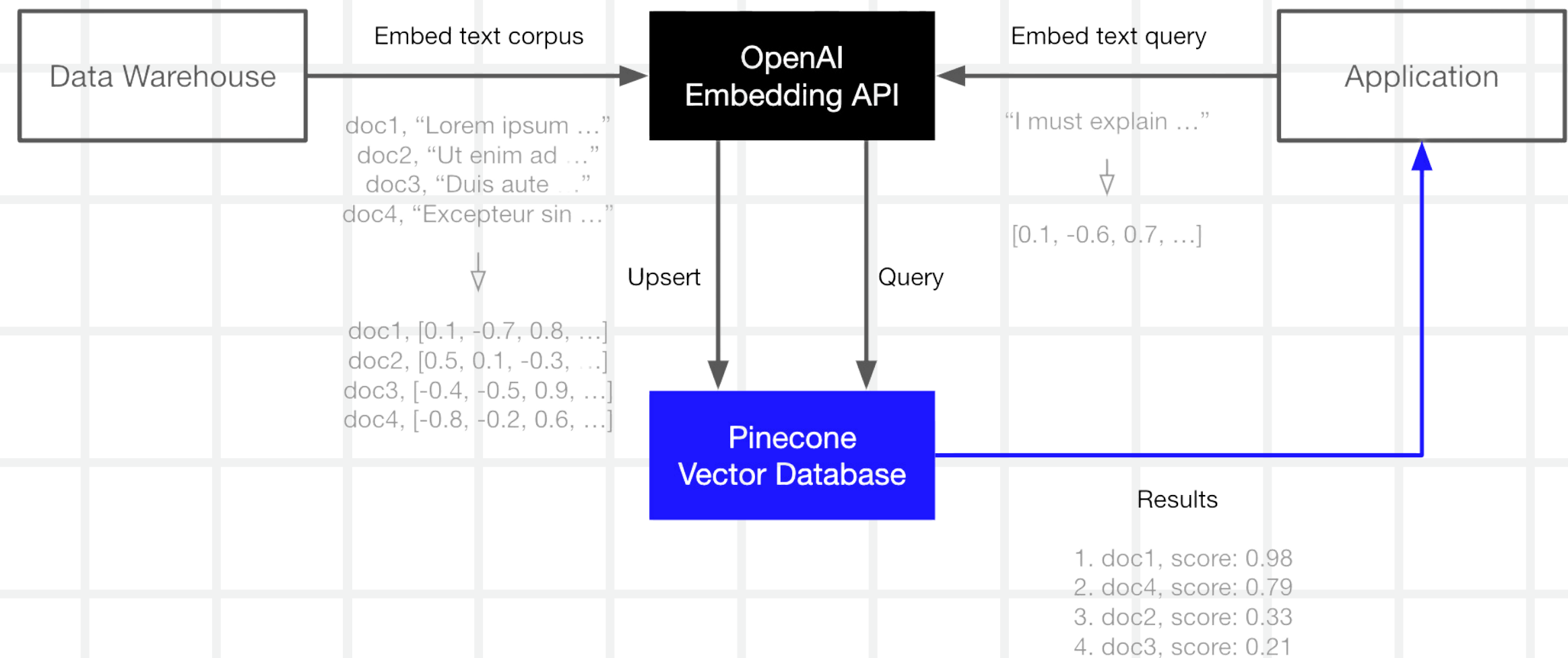
3. PASS ALL COLLECTED OUTPUT TO THE MODEL FOR PROCESSING

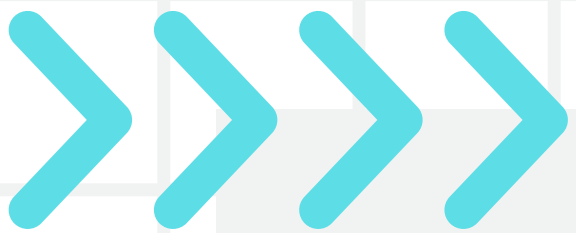


KEY TECHNICAL HIGHLIGHT

VECTOR DATABASES

- Captures meanings and contextual similarities
- Understand data's meaning





SCALING UP AND OUT

⚙️ RECOMMENDATION 1

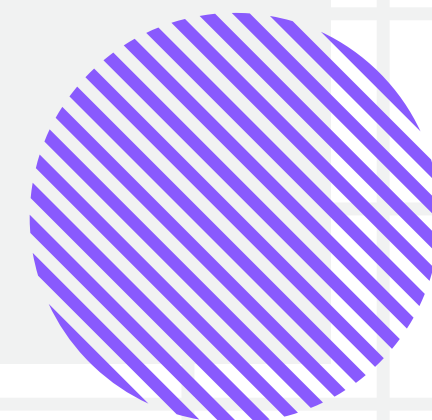
Upgrade the model, gpt-3.5-turbo to its successor, gpt-4.

⚙️ RECOMMENDATION 2

Swap out the data sources, integrate more APIs and change system settings to cater to different institutions.

⚙️ RECOMMENDATION 3

More chat logs can be added to the Chatlog database, to ensure the system remains updated with changing circumstances.



THANK YOU

